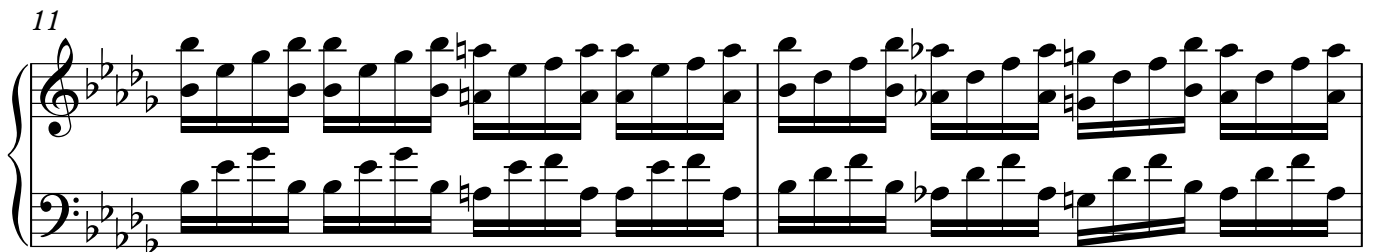
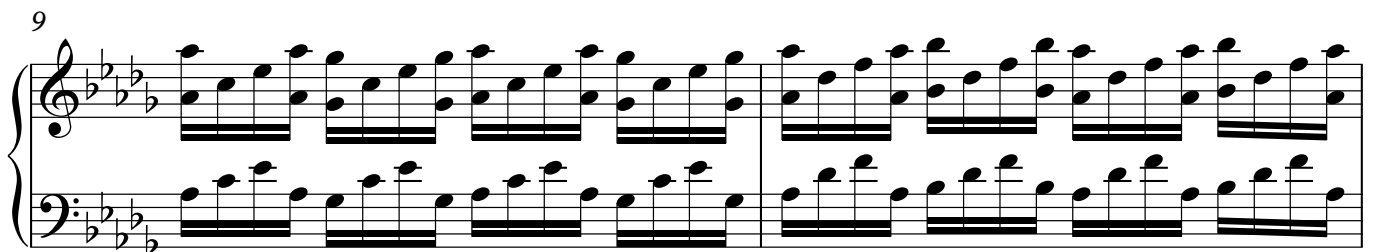
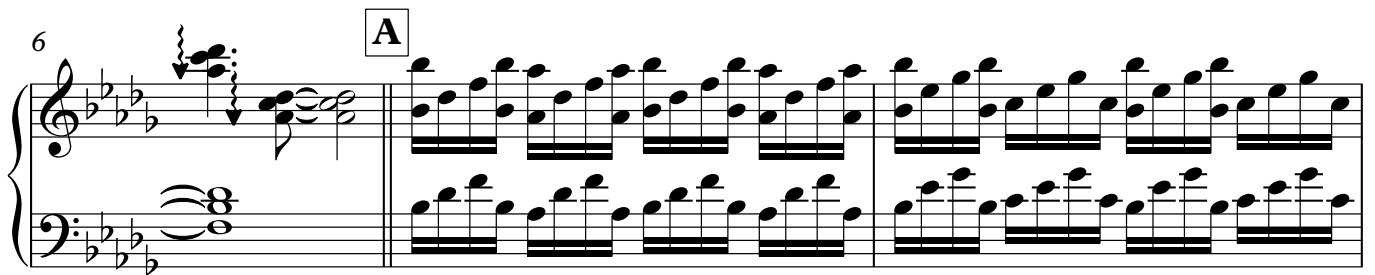
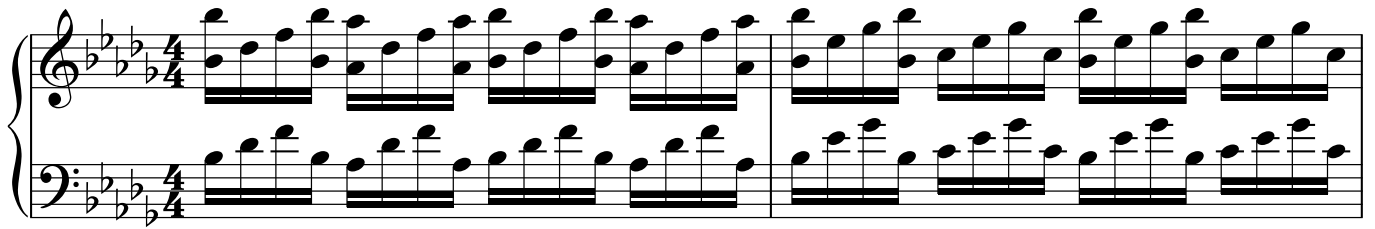


QUE LOCURA FUÉ ENAMORARME DE TÍ

Eddie Santiago

Transcripción:
Alfredo Goncalves



15 **B**

Measures 15 and 16 of section B. The music is in a key with four flats (B-flat major or D-flat minor) and 3/4 time. Both staves feature a continuous eighth-note pattern. Measure 15 has a repeat sign at the beginning. Measure 16 ends with a repeat sign.

17

Measures 17 and 18. The eighth-note patterns continue in both staves. Measure 18 ends with a repeat sign.

19

Measures 19 and 20. In measure 19, the right hand has a half-note chord (F major) on the second beat. In measure 20, the right hand has a half-note chord (B-flat major) on the second beat. The eighth-note patterns continue.

21 **C**

Measures 21 and 22 of section C. Measure 21 ends with a half-note chord (F major) in the right hand. Measure 22 begins with a half-note chord (B-flat major) in the right hand. The eighth-note patterns continue.

24

Measures 24 and 25. The eighth-note patterns continue. Measure 25 ends with a half-note chord (B-flat major) in the right hand.

26

Measures 26 and 27. The eighth-note patterns continue. Measure 27 ends with a half-note chord (B-flat major) in the right hand.

28

Measures 28 and 29. The eighth-note patterns continue. Measure 29 ends with a half-note chord (B-flat major) in the right hand.

30

33

35

37

40 **D**

42

44 **E**

46

Measures 46-48 of a piano piece. The key signature is three flats (B-flat, E-flat, A-flat). The music features a continuous eighth-note pattern in both the treble and bass staves, with some chords and rests interspersed.

49

Measures 49-50 of a piano piece. The key signature is three flats (B-flat, E-flat, A-flat). The music continues with a continuous eighth-note pattern in both the treble and bass staves.

51

Measures 51-52 of a piano piece. The key signature is three flats (B-flat, E-flat, A-flat). The music continues with a continuous eighth-note pattern in both the treble and bass staves.

53

Measures 53-55 of a piano piece. The key signature is three flats (B-flat, E-flat, A-flat). The music continues with a continuous eighth-note pattern in both the treble and bass staves.

56

F

Measures 56-57 of a piano piece. The key signature is three flats (B-flat, E-flat, A-flat). The music continues with a continuous eighth-note pattern in both the treble and bass staves.

58

Measures 58-59 of a piano piece. The key signature is three flats (B-flat, E-flat, A-flat). The music continues with a continuous eighth-note pattern in both the treble and bass staves.

60

Measures 60-61 of a piano piece. The key signature is three flats (B-flat, E-flat, A-flat). The music continues with a continuous eighth-note pattern in both the treble and bass staves.

62

Measures 62-63: Treble and bass staves with a key signature of three flats. The melody in the treble staff features eighth-note runs and a half-note ending. The bass staff provides a steady eighth-note accompaniment.

64

G

Measures 64-66: Measure 64 features a whole-note chord in the treble staff. Measures 65-66 continue the eighth-note accompaniment in the bass staff, with the treble staff resuming a melodic line.

67

Measures 67-69: Continuation of the eighth-note accompaniment in the bass staff and the melodic line in the treble staff.

70

Measures 70-72: Continuation of the eighth-note accompaniment in the bass staff and the melodic line in the treble staff.

73

H

Measures 73-74: Measure 73 features a whole-note chord in the treble staff. Measure 74 continues the eighth-note accompaniment in the bass staff and the melodic line in the treble staff.

75

Measures 75-76: Continuation of the eighth-note accompaniment in the bass staff and the melodic line in the treble staff.

77

Measures 77-78: Continuation of the eighth-note accompaniment in the bass staff and the melodic line in the treble staff.

Measures 79-80 of a piano piece. The key signature is three flats (B-flat, E-flat, A-flat). Measure 79 begins with a whole rest in the right hand, followed by a descending eighth-note scale in the left hand. Measure 80 continues the descending eighth-note scale in the left hand, with a whole rest in the right hand.

I

Measures 81-82. Measure 81 features a descending eighth-note scale in the right hand and a descending eighth-note scale in the left hand. Measure 82 continues the descending eighth-note scale in the right hand and a descending eighth-note scale in the left hand.

Measures 83-85. Measure 83 features a descending eighth-note scale in the right hand and a descending eighth-note scale in the left hand. Measure 84 continues the descending eighth-note scale in the right hand and a descending eighth-note scale in the left hand. Measure 85 continues the descending eighth-note scale in the right hand and a descending eighth-note scale in the left hand.

Measures 86-88. Measure 86 features a descending eighth-note scale in the right hand and a descending eighth-note scale in the left hand. Measure 87 continues the descending eighth-note scale in the right hand and a descending eighth-note scale in the left hand. Measure 88 continues the descending eighth-note scale in the right hand and a descending eighth-note scale in the left hand.

J

Measures 89-90. Measure 89 features a descending eighth-note scale in the right hand and a descending eighth-note scale in the left hand. Measure 90 continues the descending eighth-note scale in the right hand and a descending eighth-note scale in the left hand.

Measures 91-92. Measure 91 features a descending eighth-note scale in the right hand and a descending eighth-note scale in the left hand. Measure 92 continues the descending eighth-note scale in the right hand and a descending eighth-note scale in the left hand.

Measures 93-94. Measure 93 features a descending eighth-note scale in the right hand and a descending eighth-note scale in the left hand. Measure 94 continues the descending eighth-note scale in the right hand and a descending eighth-note scale in the left hand.